

# Babraham

WINTER 2019

## New development in Babraham/ nr Sawston

We continue to battle with the powers that be to obtain money from the new development at H1/b as it will undoubtedly impact on the village in a number of ways. The s106 fund is given to areas where disruption and alteration may occur as a result of that development. Eg pressure on schools, transport, etc.

## Traffic calming

The problem of speeding vehicles through the high street persists and we recently met with County council highways officials to discuss measures to reduce speed. Highways are currently formulating a plan for the high street. Unfortunately, the cost will come from our own account and as this particular problem was deemed a non-priority by the County Council.

## Dog walking

The dog poo bin in church lane will soon be supplemented by a second bin to hopefully avoid unsightly overflow. The

number of dog walkers in this area has increased greatly over the last year but are pleased to see that the bins are being used responsibly.

## Precept and council admin

The council voted unanimously not to increase the precept this year. Following the departure of our parish clerk last year our administration costs have increased through training as we become more diligent as a council. We believe we can absorb those additions at present.

A number of residents have expressed a desire to have an allotment. To this end we are trying to find a suitable piece of ground that we could lease or purchase for that purpose.

## Pocket park

Since clearing scrub and nettles in the pocket park the beauty of the snowdrops can at last be appreciated. The walk from the school through the park is a much more pleasant experience. The campus will be carrying out tree work in the park in February, so access will be limited at this time.

## Neighbourhood plan

The plan continues under guidance of Cllr Rob Attwood. If you have any input or queries please feel free to contact him.

## Jonas Webb

The statue of Jonas Webb is becoming obscured by the extremely ugly cherry tree adjacent to it. We are talking to tree surgeons in order to raise the skirt and remove the ivy. This will hopefully benefit the view.

Parish council meetings  
Just a reminder that the monthly meetings of the Parish Council are open to all. There is an opportunity for non-council members to speak, and the meetings are conducted in an informal manner. Please feel free to attend. They are held on the 2nd Thursday of each month (excluding December)

We are your voice on local matters so please let us know how, in your opinion, we can improve or indeed maintain our lovely village.



**Monday:** Lynton Way, Sawston - 6.30pm  
**Wednesday:** Lynton Way, Sawston - 6.30pm  
**Thursday:** The George, Babraham - 9.30am  
Lynton Way, Sawston - 7pm

Angela will put you  
through your paces  
**07799 696815**



**G A Construction &  
Groundworks Ltd**

Driveways, Patios, Block Paving, Fencing & all aspects of groundworks.

Call for your free no obligation quote - Tel: 01223 977691 / 07595 120208

[www.gaconstruction.com](http://www.gaconstruction.com)



# Remembering

Counsellor Jane Goody placed a wreath on behalf of the parish and as we stood remembering the brave from the First World War to signal 100 years since Armistice Day all those years ago I couldn't help but feel the hairs on my neck as we stood next to the burning embers of our beacon . . . remembering. The last

post gets me every time. Such a moving moment.

I think a massive thank you to Jonah (right) who not only constructed the November 5 bonfire but also provided the fire for the Armistice Day ceremony. Jonah constantly helps Babraham and has done for years so from all of us all thank you so much.

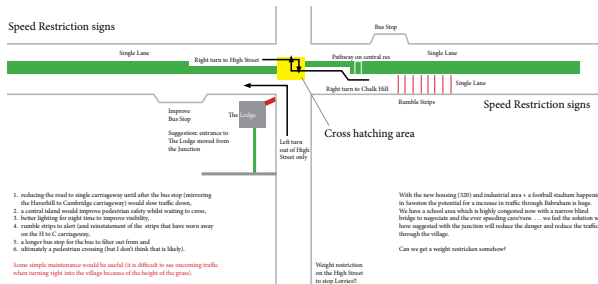


**Save the Date**  
**Village Spring Breakfast**  
**6 April**  
**Followed by a River walk**

**Raffle in aid of the church fund**

# The junction to the A1307

The Greater Cambridge Partnership (GCP) are as we speak designing us a new road structure to make the junction to and from the village a much safer place. We hope to hear from them soon as to what they have taken on board from the suggestions we made in our meeting with them. I will keep you posted as and when we here.



# Neighbourhood Plan

There has been a lull in the proceeding due to the festive season with people being away etc. We will be setting up a meeting in early February to get things moving again and if you want to get involved in any of these areas

- Development**
- Infrastructure**
- Community Facilities**
- Community Linkages**
- Areas of Beauty**
- History and Culture**
- Business Opportunities**

please come along to the next meeting, it will be in the pub so could be good fun.



## Snowdrops

The snowdrop is not native to the UK being bought in by Italian monks who introduced the bulbs into the gardens of their monasteries. From here they were spotted by visitors who collected and enjoyed a few bulbs to plant around their own homes.

*Galanthus nivalis* 'The common snowdrop' is an herbaceous perennial. The genus name *Galanthus* is derived from the Greek *Gala* meaning milk referring to milk white flowers.

Snowdrops are mainly spread by bulk division and do not rely on pollinators. They are best divided and planted 'in the green' in small groups where they will quickly root and multiply.

There are three known Babraham snowdrops.

**'Babraham'**  
Elegantly shaped, well rounded flowers. Outer segments green inverted 'V' at apex. *Galanthus plicatus*. 14cm.

**'Babraham Dwarf'** (*plicatus*)  
Compact, neat plant. Rounded flowers, olive green ovary. Leaves semi-erect, explicative, short at flowering. Inner segments

tube-like, olive green 'U' or 'V' at apex, rounded ends. Mid February (Grout. Babraham, Cambridgeshire 1985)  
**'Babraham Scented'** (*semi-double*)

Well shaped semi-double flowers. Outer segments broad, bluntly pointed. Inner segment ruff, outer whorl flared at apex, variable roughly heart shaped mark. Good perfume (Grout. Babraham, Cambridgeshire 1985)

Research at Babraham Institute has identified Snowdrop Lectins a type of protein that can bind cell membranes. Lectins research studied for its potential activity in HIV. Snowdrop Alkloid galanthamine approved for use in the management of Alzheimer's disease and in the use of traumatic injuries to the nervous system.

For more information on this fascinating plant the 'Gardeners Guide to Snowdrops by Freda Cox.

In February 2012 a single tiny snowdrop bulb was sold on an eBay internet auction site for the sum of £725! With over 20 known species and over 1,500 hybrids and cultivars the snowdrop is worth taking a closer look at. GA

## A festive Message

I am the great great granddaughter of Jonas via his daughter Elizabeth. Thrilled to see you have dressed him for Christmas and glad that he is held in such high regard. Did you know there is a snowdrop with the registered name Babraham. We hope to visit in the spring 2020. Best wishes and happy new year  
Janet Kay



# Pocket Park Clear-up

**Sunday  
28 October**

... might even be fun!

... and it was for the faithful who turned up. A lot was achieved in a few hours ... just think what could have done if more people had turned up. A huge thank you to the few who did.



Jeremy, who can argue!



Never was so much owed by so many to so few ...



Stuart ... our Chairman



Alison and Millie



## Quiz nights Open mike

**Restaurant offering a wide range of home cooked meals**

**Spacious and well stocked bar offering fine wines and traditional ales Available for hire for weddings and parties**

**A large beer garden with patio area with car park**

**Regular special offers and events**

## Useful Contacts

### Parish Council

Stuart Laurie

[stuart.laurie@babraham-village.net](mailto:stuart.laurie@babraham-village.net)

Charlotte Rogers

[charlotte.rogers@babraham-village.net](mailto:charlotte.rogers@babraham-village.net)

Jane Goody

[jane.goody@babraham-village.net](mailto:jane.goody@babraham-village.net)

Gareth Walker

[gareth.walker@babraham-village.net](mailto:gareth.walker@babraham-village.net)

Robert Attwood

[robert.attwood@babraham-village.net](mailto:robert.attwood@babraham-village.net)

Don Powell

[clerk@babraham-village.net](mailto:clerk@babraham-village.net)

### South Cambs Councillors

Kevin Cuffley and Roger Hickford

### District Councillor

Peter McDonald

The Parish Council meets on the second Thursday every month at the school 7.30. Members of the public are more than welcome to attend.

[www.babrahamschool.org.uk](http://www.babrahamschool.org.uk)

[www.babraham-village.net](http://www.babraham-village.net)

 @babrahamvillage